



Txt2Mbox (Blackberry)

User Guide

21 August 2011
Version 1.0.3

geoweb
Skyblue Intelligent Systems Ltd

Copyright Notice

Copyright (c) 2011 Skyblue Intelligent Systems Ltd. All rights reserved.

Table of Contents

1. Overview	4
1.1 The Application	4
1.2 How it Works.....	4
1.3 System Requirements	4
2. Software Configuration and Installation	5
2.1 Installation	5
2.2 Configuration	5
3. Other Functionality	10
3.1 Stop Sync.....	10
3.2 Message Buffer	11
3.3 Help Screen	12

1. Overview

1.1 The Application

Txt2Mbox is a text message archiving utility for the Blackberry device. The application copies SMS text messages that you send and receive to your email account.

1.2 How it Works

Txt2Mbox stores copies of SMS text messages that you send and receive on your Blackberry device in a buffer (a temporary storage area). At regular intervals, Txt2Mbox transfers the text messages that it has copied to your email account. Once a text message has been transferred successfully to your email account, it is deleted from the buffer.

Txt2Mbox uses the IMAP protocol to transfer the text messages to your email account. Text messages you send from your mobile device will be stored in the 'Sent' folder of your email account, and text messages that you receive will be stored in your INBOX folder. The SMS text messages are transferred to your account in email format, with the subject of the email set to indicate that it is an SMS.

1.3 System Requirements

Txt2Mbox has the following system requirements

- A Blackberry device running OS 4.5.0 or above of the following models:
 - Curve
 - Bold
 - Storm (and Storm 2)
 - Torch
- An email account accessible via the IMAP protocol (accessible via the Internet).
- Data plan from a mobile network service provider.
- [APN](#) settings for your mobile device (this may already have been configured on your device).

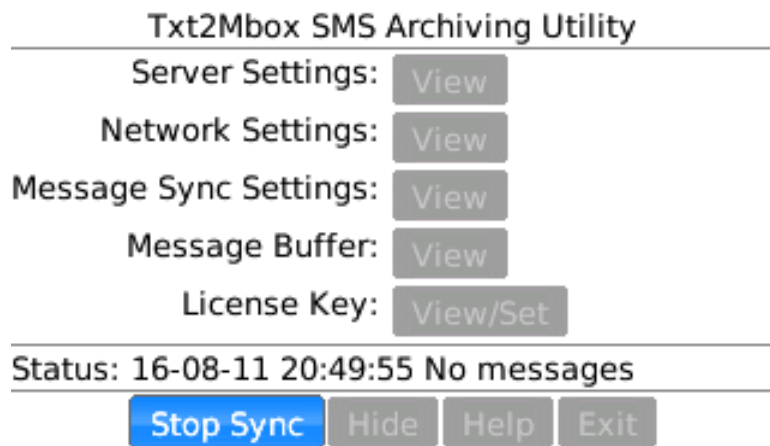
2. Software Configuration and Installation

2.1 Installation

Txt2Mbox is installed by downloading from an application distribution service such as Blackberry App World. You may need to restart your device after installation. Ensure that you grant the required application permissions if prompted when the application starts up.

2.2 Configuration

The main screen of the application has buttons that enable configuration of the application. There are settings for the mail server, network and the message buffer. The following sub-sections describe the application settings. A screenshot of the main application screen is shown below.



2.2.1 Server Settings

The server settings can be accessed by clicking on the 'View' button next to 'Server Settings' on the main application screen. The fields in the server settings section are described below:

Server Setting	Description
IMAP Server	The host name or IP address for your mail server.
IMAP Port	The mail server port. This is usually 143 (or 993 for SSL).
User Name	Your email account username. This may be your email address.
Password	Your email account password.
Use TLS	Select this check box to encrypt the connection to your mail server. It is recommended that you use an encrypted connection to your mail server. When using an encrypted connection, the IMAP port number is usually 993.
Trust All Certs (MDS)	Indicates whether the MDS server should trust any SSL certificate received from the server. This setting only applies if you are using an MDS connection.

The following is an example of the application server settings screen. The 'Test Settings' button when clicked, will result in the application making a connection to your email account and displaying the results of the connection test.

Txt2Mbox Server Settings

IMAP Server: mail.example.com
IMAP Port: 993
Username: user
Password: *****
Use TLS:
Trust All Certs(MDS):

Save Cancel

Test Settings

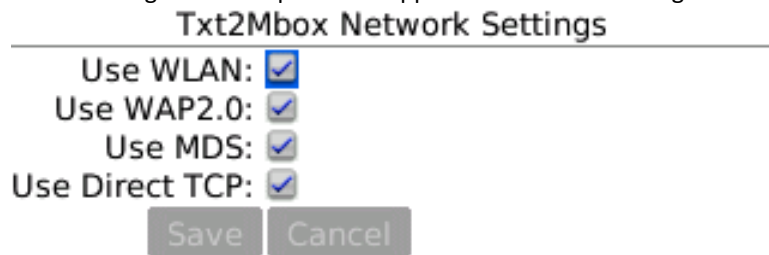
Test Result:

2.2.2 Network Settings

The network settings control which network facilities on your device can be used to transfer SMS messages to your email server. The network settings screen can be accessed by clicking on the 'View' button next to 'Network Settings' on the main application screen. The fields in the network settings section are described below:

Network Setting	Description
Use WLAN	If selected, your Blackberry device will attempt to use the wireless LAN connectivity to access your email server.
Use WAP2.0	If selected, your Blackberry device will attempt to use WAP2.0 connectivity to access your email server.
Use MDS	If selected, your Blackberry device will attempt to use the MDS connectivity to access your email server.
Use Direct TCP	If selected, your Blackberry device will attempt to use direct TCP connectivity to access your email server.

The following is an example of the application network settings screen.



Note that the Blackberry device will attempt to connect to your mail server using the connectivity options in the order shown. For example, with the settings in the screenshot shown above, the WLAN connection will be tried first. If there is no WLAN connectivity, the WAP2.0 option is tried next, followed by MDS and direct TCP last. If the 'Use WLAN' box was not checked, the Blackberry device will initially attempt to connect using WAP2.0

2.2.3 Sync Settings

The sync settings control whether the Blackberry device should transfer SMS messages to your email account, how frequently the application should check for new messages that have not yet been transferred, how many messages may be stored temporarily, and how the messages should be formatted. The fields in the network settings section are described below:

Sync Setting	Description
Sync Active	Controls whether the message synchronisation task executes at regular intervals. The message synchronisation task is responsible for transferring SMS text messages to your email account.
No Sync While Roaming	Controls whether the message synchronisation task should be disabled if the device is roaming. If this setting is active, the application will not attempt to transfer messages if you're roaming (using a network other than your own – for example if you are in a different country).
Sync Interval (Secs)	Sets the interval (in seconds) between the message synchronisation tasks. The application will check for new messages in the buffer every [Sync Interval] seconds.
SMS Buffer Size	The maximum number of messages to store in the buffer. Once the limit is reached, the oldest message will be deleted for each new SMS message received.
Use Reply Domain Postfix	If this option is selected, the SMS is formatted such that it can be replied to within the email client. This option is useful if you have an email to SMS service with your email account. When this option is selected, the 'Reply Domain Postfix' field should also be selected. For example, if this option is set and the 'Reply Domain Postfix' field is set to 'example.com', an SMS message received by the Blackberry device from a telephone number of 123456789 will be formatted as an email from 123456789@example.com when the SMS is transferred to the email account.
Reply Domain Postfix	A domain name – see the 'Use Reply Domain Postfix' option above.

The following is an example of the application sync settings screen

Txt2Mbox Sync Settings

Sync Active:

No Sync While Roaming:

Sync Interval (Secs): 10

SMS Buffer Size: 100

Use Reply Domain Postfix:

Reply Domain Postfix: example.com

2.2.4 License Key

Selecting the 'View/Set' button on the main application screen will result in the license key screen being displayed. The application license key is set automatically by the app store at purchase time. A new key can however be supplied on this screen. The key will be validated before it is stored. If the application does not have a license key, it will only transfer 2 text messages to the configured email account (the application will have to be restarted before more messages are transferred).

Txt2Mbox License Key

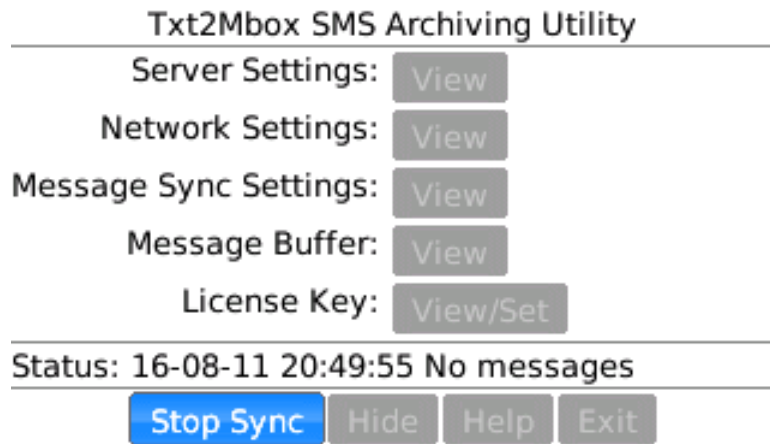
Key: - - -

3. Other Functionality

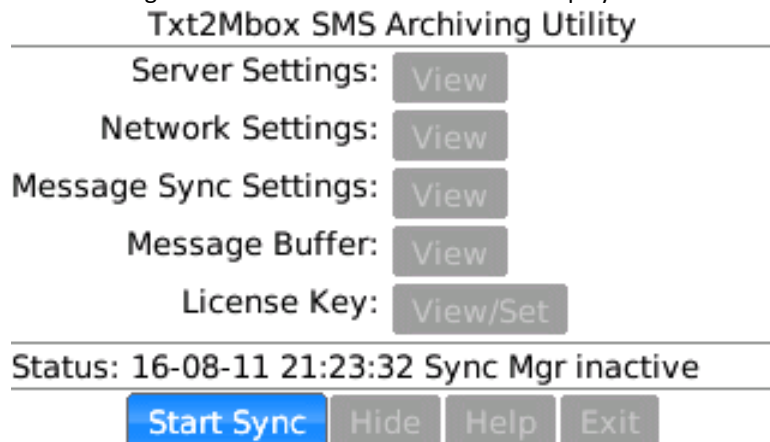
3.1 Stop Sync

The 'Stop Sync' button on the main application screen is used to temporarily disable connections to the mail server if there are messages in the buffer. Once the 'Stop Sync' button is pressed, it is replaced with a 'Start Sync' button. The 'Stop Sync' button enables access to the message buffer.

The following screenshot shows the main screen when the 'Stop Sync' button has not been pressed.



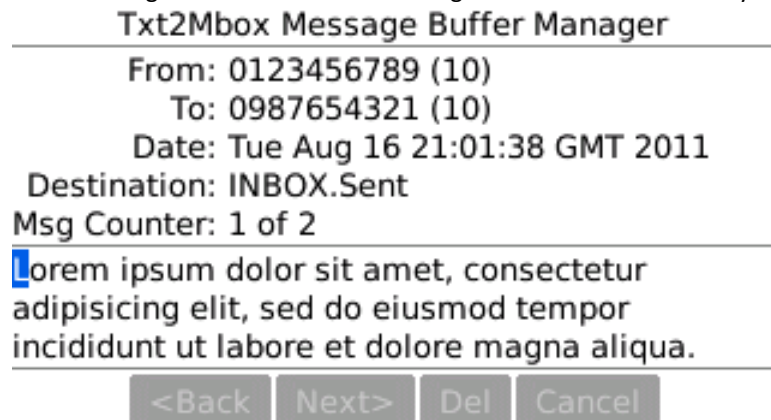
The following shows the main screen when the 'Stop Sync' button has been pressed.



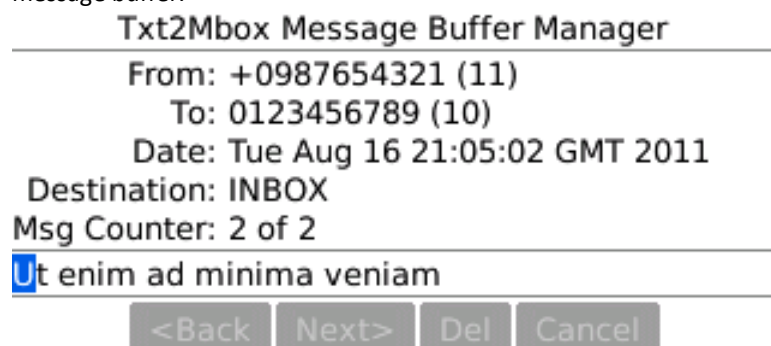
3.2 Message Buffer

The message buffer contains the SMS messages that have not yet been transferred to the email account. The message buffer can be accessed by clicking on the 'View' button next to 'Message Buffer' once the 'Stop Sync' button has been activated. The message buffer screen enables cycling through the messages currently stored and also allows deletion of messages.

The following screenshot shows a message sent from the Blackberry device that is still in the message buffer.




The following screenshot shows a message that has been received by the Blackberry device that is still in the message buffer.



3.3 Help Screen

The help screen is displayed when the 'Help' button is selected on the main screen. The help screen displays a summary of the application functionality.

Txt2Mbox v1.0.3.15 

Txt2Mbox is a text message archiving utility for the Blackberry device. The application will copy SMS text messages that you send and receive to your email account.

Txt2Mbox stores text messages you send in the 'Sent' folder of your email account, and text messages you receive will be stored in your INBOX folder.

For more information on this application, see <http://web.geo.skyblue.eu.com>

 Copyright © 2011 Skyblue Intelligent Systems 